

Information for Property Owners in Badger Creek Watershed

Check your property ownership documents for mention of any structures and easements.

There are 43 flood control structures in Badger Creek Watershed that were planned, protected and developed in part through the USDA's PL-566 program administered by the NRCS. The Madison County Soil and Water Conservation District (SWCD) and Board of Supervisors share responsibility for ensuring the operation and maintenance of flood control structures in Badger Creek Watershed, and the Madison County SWCD holds permanent easements on the structures and adjacent lands and properties.

The "whole farm" easements around flood control structures provide the grantee the right of ingress and egress at any time to check structures to ensure proper operation and maintenance, as well as access for equipment involved in maintenance and repair of flood control structures. Landowners shall not permit alteration of any improvement installed by the terms of the easements without prior approval of the Madison County SWCD. Landowners shall maintain all improvements in accordance with acceptable conservation methods.

SETBACK REQUIREMENTS FOR FLOOD CONTROL STRUCTURES UNDER EASEMENT IN BADGER CREEK WATERSHED:

For grade stabilization structures (ponds and basins):

- 75 linear feet from top of dam elevation
- 75 linear feet from the constructed back toe of the dam, splash pool, and auxiliary spillway
- Any obstruction that may impede the flow of the principle spillway cannot be placed within 2 feet of elevation below the principle spillway outlet pipe flow line

For waterways and drop box culverts:

- 100 linear ft. from centerline of waterway (200 feet total)

No permanent or temporary structures are permitted within setback areas.

Examples of structures include: buildings, shelters, septic systems, fences, crossings, livestock facilities, sidewalks, docks, gazebos, trees, gardens, etc.

No land disturbing activities are allowed within the setback areas without prior approval of the Madison County SWCD board of commissioners. This includes the installation of drainage tile and tile hook-ups.

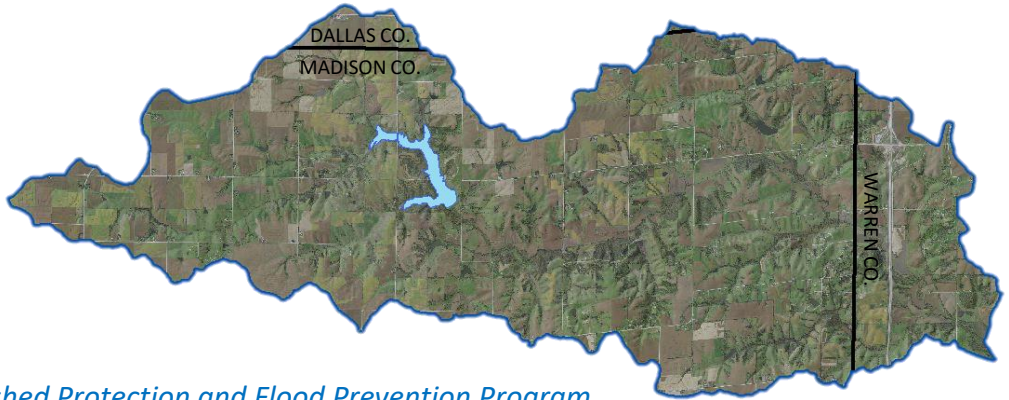
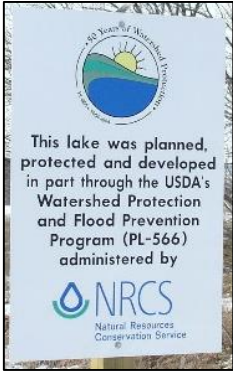
For all properties within easements:

- Any area where land disturbing activities occur (bare ground is created) will be vegetated immediately (within 14 days) and adequate erosion control will be provided until protective vegetation is established.

Landowners must report maintenance issues to the Madison County SWCD

Examples include: plugged pipes, tile blow-outs, tree encroachment, and erosion around structures

Badger Creek Watershed Background



PL-566 = The Watershed Protection and Flood Prevention Program

In 1957 a group of concerned landowners formed the Badger Creek Watershed Committee to address concerns over flooding, siltation, crop loss, and bridge damage. The Badger Creek Watershed Subdistrict was organized under Iowa Code in 1961, and includes the Madison County Soil & Water Conservation District (SWCD) and Board of Supervisors, plus Dallas and Warren SWCDs.



Despite being constructed with public funds, flood control structures are still PRIVATE PROPERTY (with the exception of Badger Creek Lake)

The Subdistrict partnered with the USDA's Soil Conservation Service (now the Natural Resources Conservation Service) and PL-566 to plan and construct 43 flood control structures throughout the watershed, including the lake itself, ponds, waterways, and grade control structures such as concrete drop boxes and aluminum toewalls.

The Madison County SWCD and Board of Supervisors share responsibility for ensuring the operation and maintenance of flood control structures in Badger Creek Watershed, and the Madison County SWCD holds permanent easements on the structures and adjacent lands and properties.



Waterway with aluminum toewall

Maintenance and repair of structures is funded by a tax levy (\$1.08/\$1,000 property value) assessed to properties in the watershed. The Subdistrict holds an Operation & Maintenance Tour every summer to visit structure sites and assess maintenance needs in the watershed.

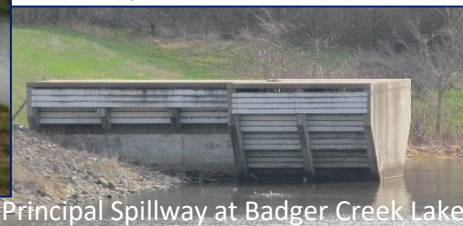
The Subdistrict also holds an Annual Meeting and Budget Hearing after the first of the year, during which the Subdistrict reviews and approves funding for repair projects. For repair cost estimates exceeding \$20,000.00, the Subdistrict will publish the project in the paper and request sealed bids from contractors.



Waterway with drop box structure



← Annual Operation & Maintenance Tour with SWCD Commissioners, County Supervisors, and Field Office staff



Principal Spillway at Badger Creek Lake

Property owners are **required to report operation and maintenance issues** for Badger Creek Watershed flood control structures! Contact the Madison County SWCD:

(515) 462-2961 ext. 3